

User MANUAL

---

clodagh 

# Libra <sup>TM</sup>



[www.oakworks.com](http://www.oakworks.com) · 717.235.6807



**OAKWORKS<sup>®</sup>**

#### Notice

The information contained in this document is subject to change without notice and should not be construed as a commitment by OAKWORKS®, Inc.

OAKWORKS®, Inc. assumes no responsibility for any errors that may appear in this document nor does it make expressed or implied warranty of any kind with regard to this material, including, but not limited to, the implied warranties of merchantability and fitness for a particular purpose.

OAKWORKS®, Inc. shall not be liable for incidental or consequential damages in connection with or arising out of the furnishing, performance, or use of this document and the program material which it describes.

Printed in USA

All rights are reserved. No part of this document may be photocopied, reproduced or translated to another language without prior written consent of OAKWORKS®, Inc.

OAKWORKS® is a registered trademark of OAKWORKS®, Inc.

# Table of Contents

---

- Product Use Description ..... 1
- Important Safety Instructions
  - Symbol Identification..... 1
  - Safety Instructions ..... 1-2
- Product Description & Photo
  - Clodagh Libra ..... 3
- Installation
  - Facility Plumbing Instructions..... 4-5
  - Facility Electrical Instructions ..... 6
  - Grounding ..... 6
- Directions for Use
  - Control Operations ..... 7
  - Moving the Table ..... 8
  - Leveling the Table..... 8
  - Storage Shelf Use..... 9
  - Accessory Outlet ..... 9
  - Lowered Arm Rest Use..... 9
  - Adjustable Arm Rest Installation and Adjustment ..... 10
  - Leg Rest Use ..... 11
  - Foot Rest Use ..... 11
  - QuickLock Face Rest ..... 12
  - Manicure Arm Rest Use ..... 12
  - Foot Bath Use ..... 13-14
- Cleaning & Disinfection ..... 15
- Inspections & Maintenance ..... 15
- Warranty Information ..... 15
- Model Number & Serial Number ..... 16
- Specifications
  - Product Specifications..... 17
  - Environmental Conditions ..... 17
  - Electrical Specifications ..... 17
- Contact Information .....back cover

---

# Product use description / important safety instructions

## product use description

The Clodagh Libra is a powered positioning table used to support the client during spa treatment, massage, pedicure and manicure procedures. It is intended to be operated by a healthcare professional in a spa environment. No special training is required but a review of the following Safety Instructions is important for the safety of the operator and client. The healthcare professional should read and understand this entire manual before use with a client. There are no known contradictions to the use of this equipment.

## Symbol Identification



This symbol, when used in this manual and on product labels, represents a caution warning. Be sure to read and comply with all precautions and warnings.



This symbol, when used in this manual and on product labels, warns against an electrical shock hazard. Be sure to observe and comply with all warnings.



This symbol, when used in this manual or on product labels, indicates a Protective Earth (Ground) Terminal.



This symbol, when used in this manual or on product labels, indicates that the product should be protected from moisture. The humidity specifications for Transport & Storage are listed in the environmental conditions section of this manual.



This symbol is used in documentation on this product, warns that during transport there should be no stacking of containers.



This symbol is used to indicate that the operator should consult the user manual.



This symbol, when used in this manual or on product labels, indicates alternating current (AC).



This symbol, when used in this manual or on product labels, indicates direct current (DC).

## important safety instructions



**caution**

**Read and Save These Instructions**

The Backrest and Leg Rest sections are not designed to support the entire weight of the patient. Do not sit on the Backrest or Leg rest sections.

Consult your physician if you are diabetic, have poor circulation, if any area of your feet or legs are inflamed, has an open wound or if any other questions about whether you should be using hydro massage equipment.

As with any moving mechanism there are potential pinch points around and underneath the table. It is the responsibility of the operator of this equipment to insure that bystanders are not in the area below or around this equipment during operation.

## Important Safety instructions

---

**Maximum Table Weight Limit: (patient and accessories) 500 lbs./226 kg. Do not exceed.**

**Maximum Shelf Weight Limit: 225 lbs./102 kg. Do not exceed.**

**Maximum Leg Rest Weight Limit: 125 lbs./57 kg. Do not exceed.**

Use this furnishing only for its intended use as described in these instructions. Do not use attachments not recommended by the manufacturer.

Close supervision is necessary when this furnishing is used near children or disabled persons.

The table weighs as much as 342 lbs./155 kg. Never lift the table by the table top. Do not turn the table on its side.

When making adjustments to the arm rests, make certain that the client's arms are away from the working mechanism. Do not extend the accessory dowels more than 3" (8 cm.) from the table edge.

Do not store or place anything on the cabinet hood or under the backrest. This can cause damage to the table.

### *Foot Bath:*

- a. Risk of accidental injury or drowning. Exercise care when entering or exiting of the foot bath. Invalid or disabled persons should not use the hydro foot bath without trained supervision.
- b. Risk of scalding and possible drowning: Water temperatures in excess of 104° F (38° C) may be injurious to your health. Check and adjust water temperature before use.
- c. Should you experience any pain or discomfort while using the foot bath, discontinue use immediately and consult your physician.
- d. Unless thoroughly cleaned after each use, bath residue will buildup within the jets and on the surface area of any whirlpool foot bath, which can promote the growth of bacteria.
- e. DO NOT operate water jets unless completely installed or without water filled to the water level indicator above the jets.
- f. DO NOT overfill the foot bath.
- g. DO NOT stand on or in the foot bath. Use only while seated.



## WARNING

To reduce the risk of burns, fire, electric shock or injury to persons:

1. Unplug this furnishing from the electrical outlet before cleaning.
2. Unplug from outlet before adding or removing parts.
3. Never operate this furnishing if it has a damaged cord or plug, if it is not working properly, if it has been dropped or damaged, or dropped into water. Contact Oakworks Customer Service before use.
4. Keep the cord away from heated surfaces.
5. Never drop or insert any object into any opening.
6. Do not use outdoors.
7. Do not operate where aerosol (spray) products are being used or where oxygen is being administered.
8. This product is equipped with an interior accessory outlet (110V only). The total electrical load plugged into this set of outlets is not to exceed 1000 watts.
9. DO NOT permit electric appliances (e.g. hair dryer, lamp, telephone, radio, television, etc.) to be within 5 feet (1.5m) of this appliance.
10. DO NOT reach for any electrical object that has fallen into the water. Unplug immediately.



## danger

If a floor outlet is used, the outlet must not be recessed in the floor (to prevent water entering the outlet in the event of an overflow).

Risk of electric shock - Connect this furnishing to a Ground Fault Protected Outlet only. See Grounding Instructions in this manual.

Electrical Shock Hazard. The power supply/control module is located under the chair. No user serviceable parts are inside the control box. Refer servicing to qualified personnel. Unplug wall plug prior to contact with any cables connected to the power supply.

## product description

### *Clodagh Libra*



Standard Specifications			
Motion 1	Powered 25" - 33" (64-84cm.) Height Range	Patient Capacity	500 lbs. (227 kg.) (patient and accessories)
Motion 2	Powered 0-4" (0-10 cm.) Seat	Width	30" (76 cm.)
Motion 3	Powered 75° Backrest	Length	77" (195 cm.)
Motion 4	Manual Leg Rests	Padding	4" (10 cm.) Areocell
Foot Control	All powered motions	Upholstery	Premium, PVC free TerraTouch™
Table Voltage Options	120V/60Hz or 230V/50Hz	Table Weight	342 lbs. (155 kg.)
Storage Shelf	24" x 37" (61 x 94 cm.) (usable opening 11.75" x 32" (30 x 81 cm.))	Wood Stain	Natural Maple Finish
		Warranty	3 year parts, 1 year labor
options / accessories			
Wood Finishes		Lowered Arm Rest	
Adjustable Side Arm Rests (2)		Manicure Arm Rests (2)	
QuickLock Face Pad		Hand Control - All powered motions	

For electrical specs, see Specifications section.

# installation

The table comes completely assembled and ready to use. Plug the cord into a functioning GFCI outlet that is rated for the table.

Arrange the power cord and foot switch so that they will not create a tripping hazard. Place the controls in a safe location where they are convenient and accessible. Keep the controls out of the way of all table mechanisms.

If your table was ordered with the optional faucet & drain, please review typical installation instructions in the section below.

## facility plumbing instructions



### caution

When installed in the United States, the plumbing of this table must meet the requirements of any applicable state or local codes. Plumbing rough-in and final hook up should be performed by a qualified plumber and approved by a local building/plumbing inspector.

#### Customer Supplied Parts list:

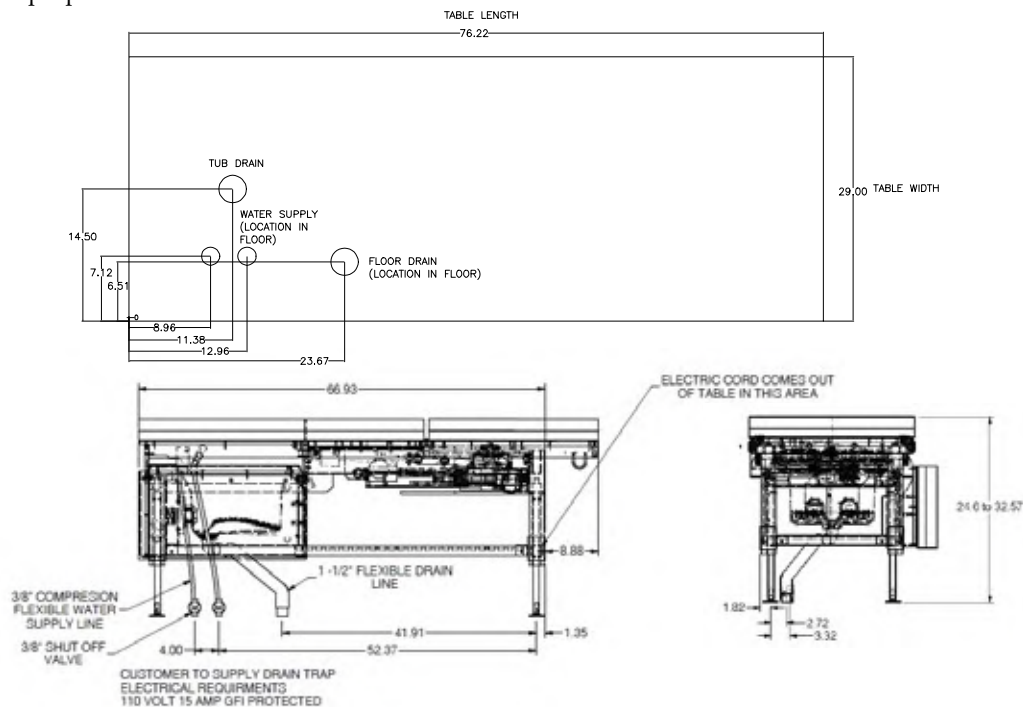
1. (2) 20" long flexible braided water supply lines with 3/8" male end foot bath faucet connection
2. (2) Shut off valves for Facility Hot/Cold water supply connection
3. (2) 1.5" PVC adapters
4. (1) 1.5" Flexible drain line for Facility DWV system connection.

#### Facility Connection Requirements:

1. An existing below floor plumbing trap and flexible drain line connection to the Libra table located on floor as detailed by illustration shown in these instructions.
2. Hot and cold water supply with braided flexible supply lines that will interface to a 3/8" female compression fitting. (supplied on the Libra table)

#### Procedure:

- a. The print below shows the details of where the plumbing rough-in locations under table are required to be positioned for proper installation.



- b. Customer to provide flexible 3/8" braided water supply lines of at least 20" in length for interfacing to facilities hot and cold water supply located on the floor beneath the table as shown in the above picture.

# installation

---

c. The table comes equipped with a faucet that has flexible 3/8" compression lines with female ends. The customer supplied flexible line will need to have male 3/8" compression to be connected to the faucet supply line.

Table - Female 3/8" compressions



Male/Female fitting connection



Customer supplied Flexible line with Male 3/8" compression fitting

d. The table comes equipped with a 1.5" PVC fitting at the drain location for the installer to connect to.



e. The Flexible 1.5" drain line supplied by customer and interfaced between the table drain and the facility drain in the floor.





# installation

## facility Electrical instructions



### caution

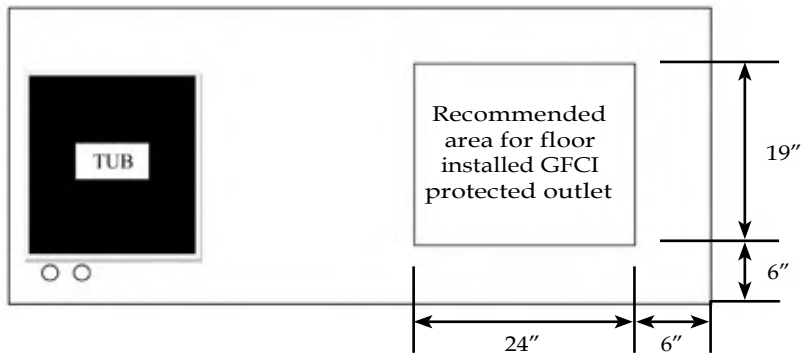
When installed in the United States, the electrical wiring of this table must meet the requirements of the National Electric Code (NEC) and any applicable state or local codes. The electrical circuit providing 115V/15A power (230V overseas) to this table must be protected by a GFCI (ground fault interrupter circuit) installed by a qualified electrician. Installation should be approved by a local building/electrical/plumbing inspector.

#### Facility Connection Requirements:

1. An electrical circuit protected by a GFCI circuit breaker as required by state or local codes.

#### Procedure:

- a. The table is equipped with a 3ft power cord which may be plugged into either a wall outlet or floor GFCI. If located on the floor, the following location is recommended.



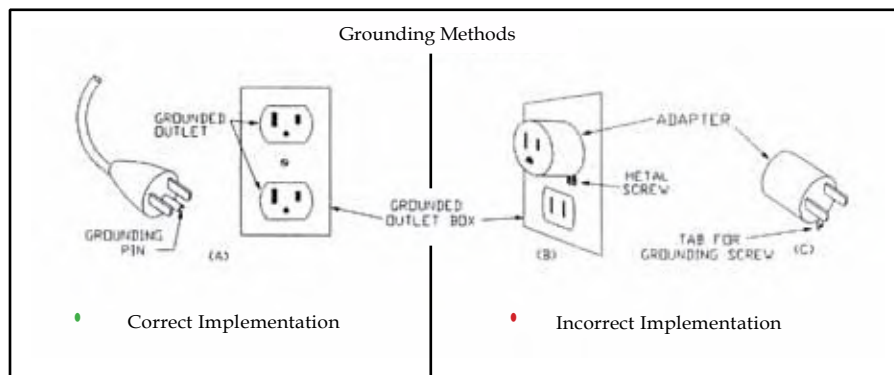
## Grounding



### DANGER

**Risk of Electric Shock - Connect this furnishing to a Ground Fault Protected Outlet only.**

This product must also be connected to a Ground Fault protected outlet with the detector in the main circuit breaker box (not on the circuit). (NOTE: GFCI ON THE TABLE ALONE IS NOT SUFFICIENT FOR YOUR SAFETY.) If it should malfunction or break down, grounding provides a path of least resistance for electrical current to reduce the risk of electric shock. This product is equipped with a cord having an equipment-grounding conductor and a grounding pin. The pin must be plugged into an appropriate outlet that is properly installed and grounded in accordance with all local codes and ordinances. See U.S. sample below.



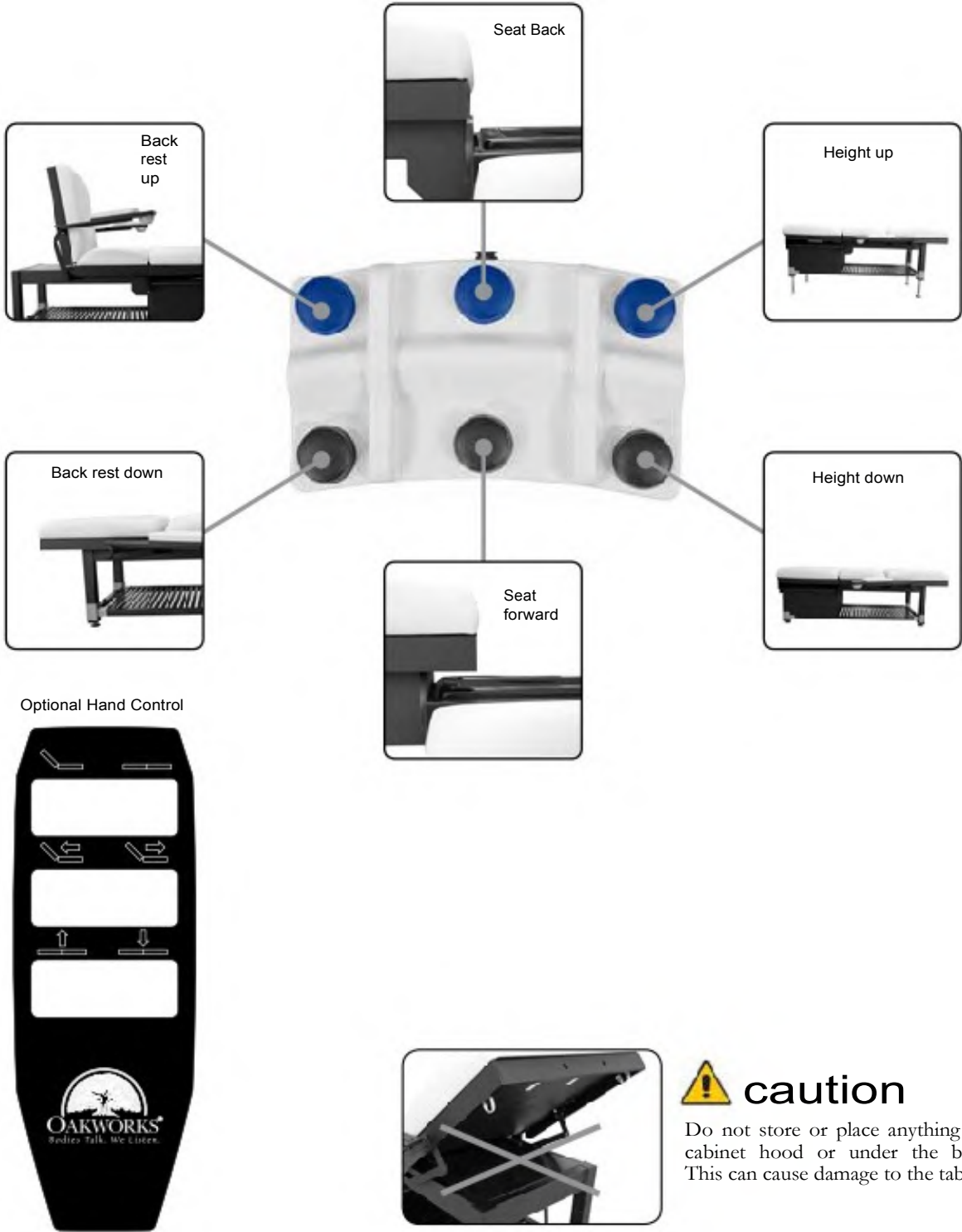
The integral GFCI should be tested on a routine basis. To test the GFCI, push the test button. The GFCI should interrupt power. Push the reset button. Power should be restored. If the GFCI fails to operate in this manner, DO NOT USE THE UNIT. Disconnect the unit and have the problem corrected by a qualified service representative or an electrician before using.

Improper connection of the equipment-grounding conductor can result in a risk of electric shock. Check with a qualified electrician or service person if you are in doubt as to whether the product is properly grounded. Do not modify the plug provided with the product - if it will not fit the outlet; have a proper outlet installed by a qualified electrician.

# directions for use

## control operations

The Foot Control and Optional Hand Control operate all functions of the table with the touch of a button. Follow the directions below to access these functions.



## Directions for use

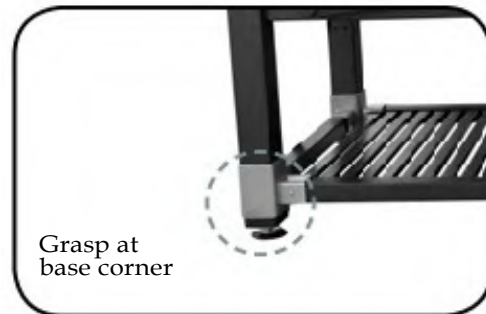
### moving the table



#### caution

Before moving the table, disconnect the power cord from the power outlet. The table weighs as much as 342 lbs. (155 kg.) Never lift the table by grasping the table top. You could damage the table and the electronics that run the tabletop. Four people are required to move the table safely. Do not use the table to transport a patient.

When moving the table, place one person at each corner of the table. Have each person firmly grasp the base at the bottom and lift the table. Be aware and use proper, safe procedures for moving a table of this size to prevent injury to yourself or the table. We strongly recommend that a flatbed dolly be used that can hold the entire table when moving the table long distances.



### leveling the table

1. Place the table in the location where you plan to use it.

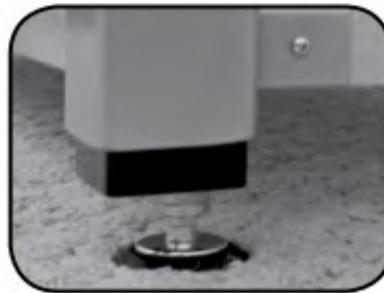
2. Rock the table to determine if it is level with the floor. If the table rocks back and forth at all, the foot that clears the floor when you rock the table will need adjustment.

3. Adjust the Leveler Foot by first loosening the locking nut found just above the Leveler Foot with the open end wrench.

4. Lower the adjustable Leveler Foot until it meets the floor snugly. Tighten the locking nut against the wooden leg of the table with the open-end wrench to fix the Leveler Foot in position.

5. Rock the table again to be sure adjustments have stabilized the table. If necessary make any additional adjustments in the same way.

Leveler Foot



9/16" Open end Wrench



Locking Nut



Tighten Locking Nut



directions for use

storage shelf use

 **caution** Maximum Shelf load weight: 225 lbs. (102 kg.)


The table has a fully integrated wood shelf. The large under-table shelf provides storage for stacks of towels and other equipment without interfering with the lift capacity of the table.



accessory outlet

This product is equipped with an interior accessory outlet under the back rest section and attach to the frame. (110V only). The total electrical load plugged into this set of outlets is not to exceed 1000 watts.

lowered arm rest use

 **caution** Do not sit on or put excessive weight or pressure on lowered arm shelf.

The Lowered Arm Rest can be removed when not in use and stored away. It can also act as a table extender, when used in place of the face rest or at the foot of the table. For complete use & care instructions see product instructions "Arm rest shelf instructions" included with the arm rest.



Lowered Arm Rest Shelf with Aromatherapy, shown here with QuickLock™ Face Rest



Lowered Arm Rest shown here used as a table extender

## directions for use

---

### adjustable Arm Rest Installation and Adjustment



#### caution

Do not use the arm rest for patient support during the mounting or dismounting of the chair. The arm rest is not designed to support the patient's weight.

#### to install the arm rests:

The Arm Rests adjust automatically as the back rest moves to remain parallel to the floor.



1. Insert end of arm rest into back-rest hole while holding the arm rest at a 60° angle to the backrest.



2. Push end all the way into the hole and drop the arm rest into the horizontal position. Pull outward to make sure the arm rest is secure.



#### to Level the arm rests:

The Arm Rest height is adjusted at the factory for each table. If the armrest starts to sag with repeated use, follow the steps below to readjust.



1. Loosen the bottom 2 set screws.



2. Turn the side set screw (clockwise to raise or counter-clockwise to lower) while adjusting the arm rest. Lift the arm rest slightly when doing this adjustment to reduce the weight.



3. Tighten the two bottom set screws to lock the position.

## directions for use

### leg rest use

 **caution** Maximum Leg Rest load weight: 125 lbs. (57 kg.)



#### Opening the leg rest

1. With both hands, gently lift the leg rest slightly and pull outward until it stops.
2. Lower the leg rest until it stops in a vertical position beside the foot bath.
3. Repeat for other leg rest.



#### Closing the leg rest

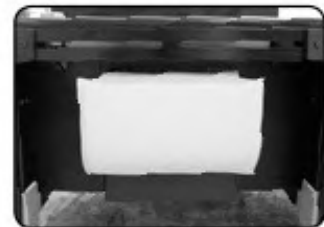
1. With both hands, gently lift the leg rest and push towards the center of the table.
2. Repeat for the other leg rest.
3. Both leg rests will drop into a small “detent” when fully closed.

**Note:** If the leg rest is opening during treatment, it is likely that the leg rests are not closed into the detent position. Check to be sure there is a gap between the pads when the two sections are put together. If the pads are too tight, remove the pads, move outward slightly and reattach. (The pads are held on with Velcro®. Pull hard and they will come off.)

### foot rest use

The foot rest is designed to store under the foot end of the foot bath as shown.

use these slots when  
using foot rest



To use the foot rest - Remove from the storage location, insert in the end rail slot & rotate to horizontal position.



## directions for use

### quicklock face rest

\* U.S. Patent #5,177,823



## caution

Do not put excessive weight or pressure on the Quicklock Face Rest. Do not extend the dows of the Quicklock Face Rest 3" (7.6 cm) from the Power (Backrest) section.

Double articulating action provides nearly limitless positioning options with the QuickLock™ Face Rest. The adjustable pad takes pressure off sensitive facial areas while providing superb support. The QuickLock™ Face Rest can be used in both prone and supine positioning and folds out of the way when not in use. Adjustments are made easily by loosening the cam locks, adjusting for height and angle and then locking the cam locks into the desired position.



**Important Safety Note:**  
Maximum Distance from edge of Table = 3" (7.6 cm.)



Insert dowels into Accessory attachment outlets.



Loosen Cam Locks & adjust face rest into place.



Tighten the Cam Locks.



The Face Rest can be used for either prone or supine positioning.

### manicure arm rest use

First, slide the arm rest pad back to expose manicure bowl. When the manicure bowl is not in use, slide the top pad forward to cover the bowl.



install hand soak bowl & fill as needed.



hand soak bowl removal



manicure surface installation

## directions for use

### foot bath use



**caution** Risk of accidental injury. Exercise care when entering or exiting of the foot bath. Invalid or disabled

persons should not use the hydro foot bath without trained supervision. Risk of scalding: Water temperatures in excess of 104° F (38° C) may be injurious to your health. Check and adjust water temperature before use. Should you experience any pain or discomfort while using the foot bath, discontinue use immediately and consult your physician. **NEVER STAND IN THE FOOT BATH.**

### filling the foot bath

1. Fill the unit with water at the desired temperature approximately 2" above the jet cover.

You can fill your sink with:

- a. The optional plumbed faucet (if supplied).
  - b. The supplied fill hose with connector - to attach to a typical sink spout.
2. To activate or deactivate this appliance, turn the ON/OFF switch to "ON".
  3. Bath additives (including oil based products) can be used in this foot bath, since their residue can be easily cleaned. **CAUTION:** Use only low foaming additives.
  4. You should always be in a seated position when putting your feet in or removing them from the foot bath.

Supplied fill hose



place this end  
in foot bath

attach this end to  
your sink spout

ON / OFF Switch



### draining the foot bath

1. Turn off the foot bath by turning the ON/OFF button to "OFF".
2. If your pedicure sink is equipped with the optional drain assembly, gently pull up and slightly twist the drain cover to open. To close the drain, twist the drain cover again and let it drop down and seat itself against the strainer body.
3. If your pedicure sink does not have a drain, place the discharge pump on the flat round surface in the bottom of the foot bath.



water  
discharge  
pump

4. Extend the hose connected to the discharge pump to the area where the water is to be drained (sink). Use the suction cup provided to secure the hose to the side of the sink and turn on the discharge pump by plugging the pump's power cord into a GFCI wall outlet. **NOTE: This pump must be connected to a GFCI wall outlet for your protection from electrical shock.**

5. When the foot bath appears to be empty, continue running the pump while removing it from the interior of the foot bath and place it in the sink or chosen draining area. As soon as the pump and hose are both fully in the sink, unplug the power cord to turn off the discharge pump. Fresh water can be used to rinse out the tank during the draining procedure.

**NOTE:** Do not leave the pump running in the draining area or in a dry foot bath for more than a few seconds because it may result in damage to the discharge pump.



## directions for use

---

### cleaning the foot bath

To maintain your pedicure sink and its pipeless jets at maximum level of hygiene, thoroughly clean the tub shell and jets after each use with a nonabrasive antibacterial cleaner, rinse thoroughly and dry completely. NEVER use abrasive cleaners on any part of the appliance.

#### Disassembly & initial cleaning

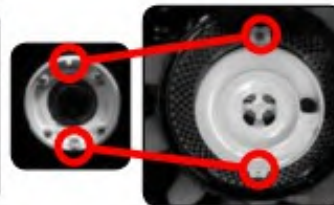
- Turn pedicure sink off by rotating the control button. Drain the foot bath according to draining procedure.
- Remove both jet assemblies. To remove each jet assembly from its casing. Rotate the jet assembly counterclockwise and pull outward.
- Remove white impeller cap & impeller.



- Spray the jet Assembly pieces, foot bath interior and jet cases with \*cleaner/disinfectant.
- Use a clean cloth to clean the jet assembly pieces, removing any visible soil.
- Scrub all surfaces of the foot bath and jet cases.
- Rinse all surfaces with tap water

#### Disinfection & re-assembly

- Spray the jet assembly pieces, jet cases and foot bath until thoroughly wet with \*cleaner/disinfectant and allow then to set for one minute.
- Rinse disinfectant from all surfaces.
- Dry the jet assembly pieces, jet cases and the foot bath with a clean cloth.
- Reassemble jet assemblies and reinsert them into jet cases, rotate them in a clockwise manner to secure them into position.
- Rotate tabs until they latch, they must be latched for the pumps to work. There are two at 180° from each other.



#### Recommended disinfectants

The use of an EPA registered cleaner/disinfectant with tuberculocidal, germicidal, pseudomocidal, Fungicidal and Virucidal efficacy is recommended. Do not use abrasive cleaners on the Pedicure Basin or Jet Assemblies. \*DISPATCH® Hospital Cleaner Disinfectant with Bleach is a suitable cleaner disinfectant for use with the above procedure.

Dispatch® - EPA Reg. No. 56392-7; EST. No. 62801-MI-001.  
Kills bacteria and viruses in 1 minute and TB in 30 seconds.

### cleaning & disinfection



#### warning

Before cleaning with any liquid cleaner be sure to unplug the power cord from the outlet.

Use a 10% sodium hypochlorite (bleach) solution or *Recommended Disinfectants* on all surfaces. Clean all sides of each upholstered section. Follow the directions on the disinfectant and wipe off excess.

#### *Recommended Disinfectants*

Protex, MadaCide, Accell TB, Virox®

**Note: Damage caused by unapproved substances will not be covered under the warranty.**

*DO NOT* use citrus based cleaners or other strong cleaners, such as alcohol, acetone, higher concentrations of bleach or other products that contain high concentrations of these substances.

*DO NOT* expose the fabric to temperatures below 50°F/10°C or above 104°F/40°C.

*DO NOT* expose the fabric to direct sunlight, adhesives, liquids, or abrasive materials.

### inspections & maintenance

#### RECOMMENDED REGULAR INSPECTIONS (monthly or local standard)

- Check for damage to the power, hand control or foot control cables.
- Visually inspect components for obvious damage that could cause problems during operation.

#### RECOMMENDED PERIODIC INSPECTIONS (yearly or local standard)

- Check for damage to the power, hands control or foot control cables and all visible wiring.
- Visually inspect components for obvious damage that could cause problems during operation.
- Check all mechanical functions using the hand control. Repeat using the foot control. Check for abnormal noises.
- Replace any missing or illegible labels.
- Check that all fasteners are present and fastened securely.
- Check table grounding.
- Clean unusual buildup of dirt on the chair and/or parts of the chair not normally cleaned on a regular basis.
- Check for tears or cracks in the upholstery.

#### MAINTENANCE

- No specific maintenance tasks are required.
- Oakworks medical tables/chairs are designed and built to provide many years of dependable service. Please follow local regulations and laws when disposing of the electrical components used in this chair.
- **For all Customer Service related problems refer to the Service Manual**

### warranty

**View complete warranty details at [www.oakworks.com](http://www.oakworks.com)**

# model number & serial number

## model & serial numbers



The model number and serial number are located under the leg rest section of the table.

**Clodagh Libra**

**Power Rating**

US	120 V	60 Hz	400 W	3.3 amps
----	-------	-------	-------	----------

**Made in the U.S.A.**  
*with U.S. Imported Parts*

Inspected By: \_\_\_\_\_

**Serial Number** → 16796025

**Model Number** → LAPSEB312577ACTTZZPBST

Ser#: LA1565022  
Libra 31 x 25-33 x 77 AC/TT/PB/ST  
TTSKYBLUE 01/04/2013 Order#:654321  
Notes: Sample Product Label

**Oakworks®, Inc.**  
923 East Wellspring Rd., New Freedom, PA 17349  
Toll Free Phone: 800-558-8850 www.oakworks.com  
Phone: 717-235-6807 FAX: 717-235-6798

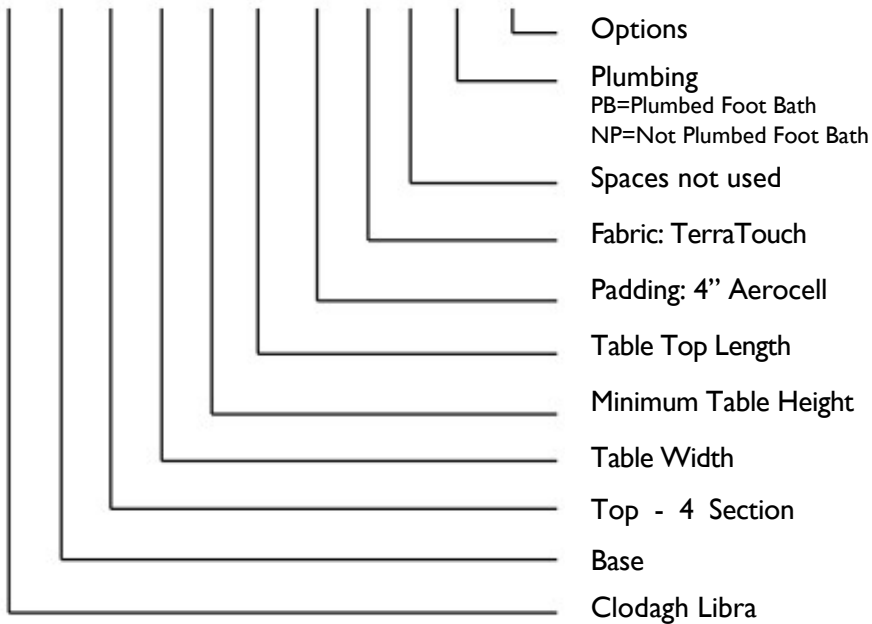


Label Part No. 62521-US-ClodaghLibra-US rev. 51110

Model Numbers and Serial Numbers always start with a letter.

## Model Number description

LAPSEB312577ACTTZZPBXX



## specifications

product specifications	
Weight	342 lbs. (155 kg.)
Shipping Weight	430 lbs. (195 kg.)
Lifting Capacity	500 lbs. (227 kg.)

environmental conditions			
Conditions	Temperature	Humidity	Atmospheric Pressure
Normal Use	50° (10°C) to 104° (40°C)	20% to 60% RH	98 to 105 kPa
Storage & Transport	-20° (-29°C) to 135° (57°C)	20% to 95% RH	98 to 105 kPa

NOTE: During transport, DO NOT stack containers.



electrical specifications			
Designed for:	North America	Europe	Japan
Input Service	120 VAC/15 amp/60 Hz	230 VAC/10 amp/50/60 Hz	100 VAC/20 amp/50 Hz
Current Draw	3.3 amps	1.8 amps	4.0 amps
Power Consumption	400 watts	400 watts	400 watts
Voltage Output to Actuators	24 VDC	24 VDC	24 VDC
Electric Shock Protection	Class 1 Equipment	Class 1 Equipment	Class 1 Equipment
Mode of Operation	Intermittent Operation MAX 2 minutes ON 18 minutes off	Intermittent Operation MAX 2 minutes ON 18 minutes off	Intermittent Operation MAX 2 minutes ON 18 minutes off

---

this page is intentionally left blank

---

this page is intentionally left blank

---

this page is intentionally left blank

# User MANUAL

---

clodagh 

# Libra <sup>TM</sup>

## Contact Information:

### **Oakworks® Inc.**

923 East Wellspring Road  
New Freedom, PA 17349

Phone: 717-235-6807

FAX: 717-235-6798

[www.oakworks.com](http://www.oakworks.com)

---



Manual Part Number MMMNST0020-EN  
Revision level: A

English, Printed in USA



# OAKWORKS®